

The Estate Manager

Leverage the full potential of your estate to support merchant success.

INSTALLED TERMINALS

| | |
|----|----------------|
| 50 | Ingenico TETRA |
| 30 | Ingenico AXIUM |
| 15 | Ingenico MOBY |
| 5 | Other brands |

- ▶ Never lose track of your terminal thanks to our geofencing technology
- ▶ Keep devices secure and updated for business-critical transactions with our next-generation Mobile Device Management
- ▶ Deploy new services with a range of new downloadable business applications
- ▶ Optimise business decisions and take control of your TCO

Today's estate management is becoming more and more complex as acceptance points proliferate and regulatory pressure intensifies. That's where the Estate Manager can help. It offers a flexible and versatile solution to help you manage a diverse range of payment terminals and security protocols, simply and efficiently.

The Estate Manager helps you maintain full control of your estate on a daily basis, enabling you to monitor and manage the configuration and behaviour of all terminals in your estate at all times.

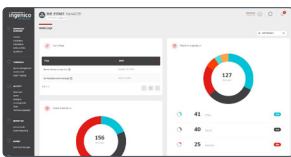
Looking to create new revenue streams? The Estate Manager allows you to offer services that enhance customer engagement, while controlling your estate management costs.

Keep control of your estate at your fingertips to fully manage the terminal's lifecycle and optimise your TCO.



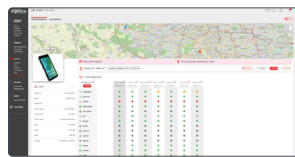
1. MANAGE AND SECURE

Make sure your terminals always up to date with the latest software applications, OS releases and security keys. Change your terminal parameters whenever you need.



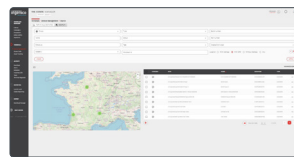
2. TRACK AND CONTROL

MDM (Mobile Device Management) and geofencing enhance your ability to track and control your fleet.



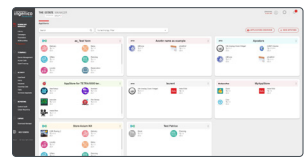
3. SUPPORT YOUR MERCHANTS

Improve your remote maintenance and better monitor the health of your estate using The Estate Manager's terminal diagnostics and remote desktop features.



4. DEPLOY NEW SERVICES

Our Appstore makes it easy for your merchants to install on their terminals the applications that you have curated for their business development.



A 2-level offer with modular functionalities:



ADVANCED FEATURES

Create additional value from your terminal with advanced services

| | |
|-------------------------------|---|
| Remote Key Injection | ☐ |
| Remote Helpdesk | ☐ |
| Multimedia Content Management | ☐ |
| Heartbeat and alerting | ☐ |
| Asset tracking | ☐ |
| App Store | ☐ |
| Terminal Diagnostic | ☐ |

CORE OFFER

All the essential services you need to optimise your fleet management

| | |
|-----------------------------------|---|
| Software applications download | ✓ |
| Parameters management | ✓ |
| OS update | ✓ |
| Support of non-ingenico terminals | ✓ |
| MDM for Android | ✓ |
| REST APIs for integration | ✓ |

Eliminate technical complexity and variable costs by opting for SaaS or BPO hosted operations and entrusting your estate management to Ingenico experts. The Estate Manager will allow you to focus on your core activities and accelerate the business of your merchants!



www.ingenico.com

ingenico